

# OnCell Central Manager

*Centralized private IP software for large-scale OnCell device management*



## Features and Benefits

- Cost-effective private IP solution
- Manage, group, monitor, configure, and upgrade the firmware of all your devices from OnCell Central Manager
- Visual overview of device status and flexible monitoring on various platforms
- Grouping of user accounts and devices for effective access control

## Introduction

Looking for an easy way to access network devices with private IP addresses over the Internet? Moxa's OnCell Central Manager supports using private IP addresses to lower your operational costs and reduce the time needed to set up a connection to your devices. Moxa's OnCell Central Manager offers an industrial-grade centralized solution that allows you to configure, manage, and monitor remote devices on a private network, over the web.

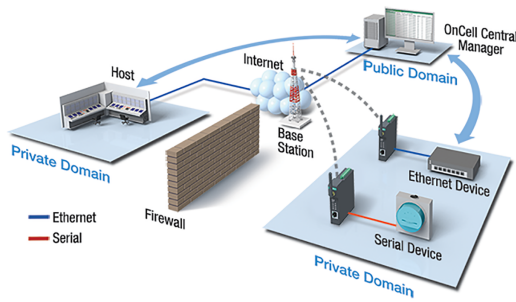
Due to the limited availability of public IP addresses, most cellular service providers only offer private IP addresses for mobile devices to connect to the Internet. However, the nature of private IP addresses makes it extremely difficult to access your cellular devices from a public network. This is where OnCell Central Manager comes in. OnCell Central Manager stands between you and your cellular devices and allows you to access your devices from anywhere on the Internet.

By providing a central point of access to remote devices, OnCell Central Manager makes it easy for you to manage multiple devices. Using a standard web browser, you can securely make configuration changes to a device, manage devices, and monitor device status. OnCell Central Manager helps you reduce maintenance costs. Since you can diagnose and solve problems from a central site, you won't need to make as many trips to remote locations. OnCell Central Manager can be hosted at a customer's central data center or through a Moxa partner's server, and can be accessed securely from anywhere across a wired or wireless IP network, including the Internet.

## Easy Deployment

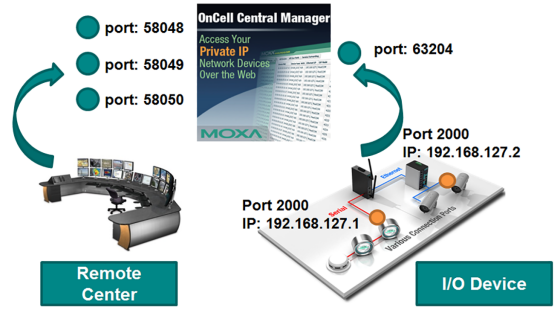
### Private IP Solution

OnCell Central Manager provides a way to enable public domain access at no extra cost.



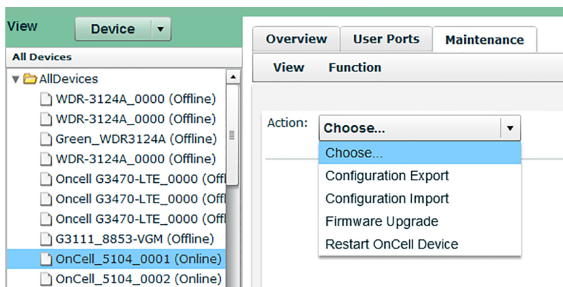
### Port-Based Data Exchange

OnCell Central Manager provides data exchange capability between a remote center and field site by enabling exchange ports.



### Remote Configuration and Firmware Upgrade

OnCell Central Manager can also remotely update firmware and supports mass device configurations, making the deployment of large numbers of devices quick and easy.



### Firewall Friendly

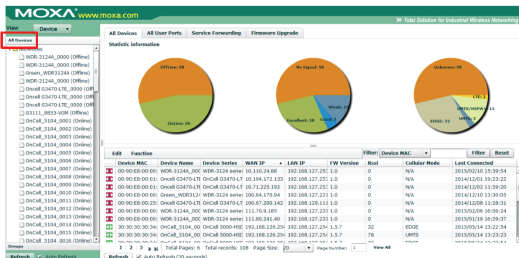
OnCell Central Manager makes it easy for you to define all control ports and user ports, and change the ports if necessary.

| Overview               | User Ports   | Maintenance |                 |                  |      |                |
|------------------------|--------------|-------------|-----------------|------------------|------|----------------|
| View Function          |              |             |                 |                  |      |                |
| User Ports             |              |             |                 |                  |      |                |
| Telnet                 |              |             |                 |                  |      |                |
| Port: 0 Status: Closed |              |             |                 |                  |      |                |
| Operation Mode         |              |             |                 |                  |      |                |
| Status                 | Port Type    | OP Mode     | Serial Port     | Ethernet Port    |      |                |
| Registered             | Command      | TCP Server  | Port 1          | 51049            |      |                |
| Registered             | Data         | TCP Server  | Port 1          | 50025            |      |                |
| Service Forwarding     |              |             | Delete Record   | Reset Forwarding |      |                |
| Status                 | Service Port | Protocol    | LAN Device Name | LAN IP           | Port | Description    |
| Registered             | 52076        | TCP         | OnCell#1hello0  | 1.1.1.1          | 2560 | OnCell#1hello0 |

## Smooth Operation

### Easy-to-Use Interface

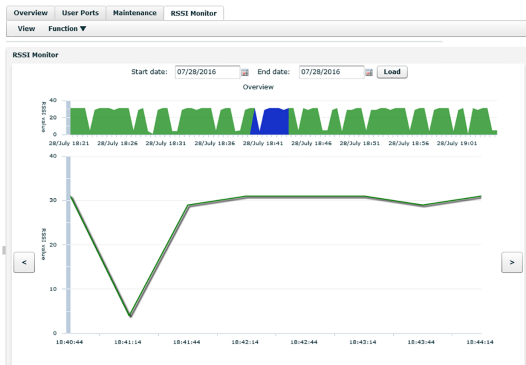
Quick sorting and filtering of devices as well as device status visualization provide operators with an efficient and easy way to check device statuses.



## Troubleshooting

### Easy to Troubleshoot

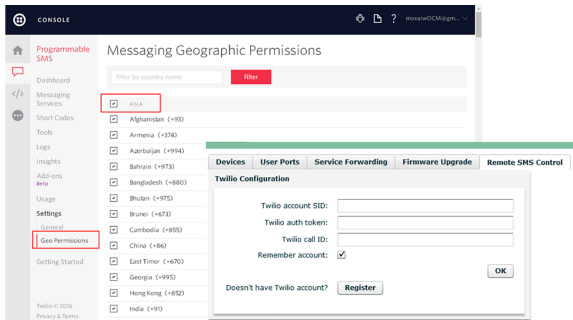
Cross checking the system log and the RSSI history of a device provides further information for troubleshooting device issues.



Note: Install the latest OnCell firmware to ensure that your OnCell devices support the RSSI monitoring function. Firmware for all Moxa products can be downloaded from Moxa's website.

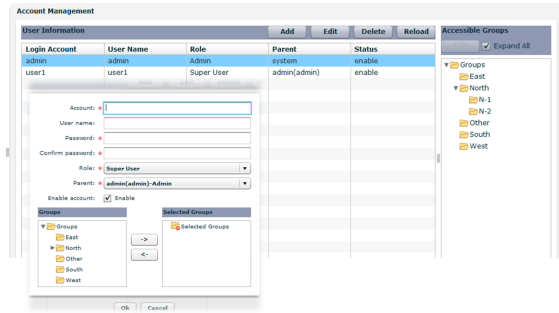
### Account Classification Management

OnCell Central Manager allows the administrator to assign different roles, give each account various access levels, and monitor the current status. Each account created can be assigned different access rights to the various groups.



### SMS Remote Control

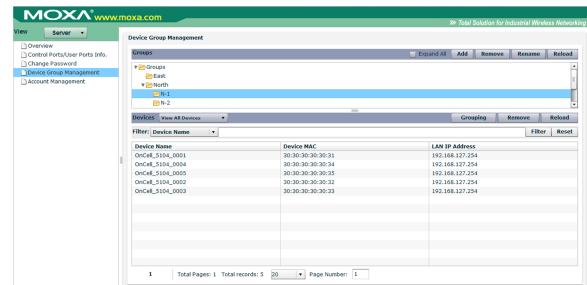
OnCell Central Manager uses a third-party cloud service to send SMS control commands to OnCell devices to remotely reboot, initiate data connections, and perform firmware upgrades.



Note: The Twilio SMS service only supports the OnCell G3150A-LTE.

### Device Group Management

By using the flexible device grouping function, operators can organize OnCell devices into different groups for easy monitoring of device statuses for different applications.



## Specifications

### Hardware Requirements

|   |  |
|---|--|
| Host System   | Intel® i5 or above (64-bit recommended)  |
| Your host hardware must meet the following minimum requirements | <ul style="list-style-type: none"> <li>4 GB RAM (or greater)</li> <li>500 MB of free disk space</li> </ul> |

### Software Requirements

|                  |  |
|------------------|--|
| Operating System | <p>x86 OS: Windows Server 2000, Windows Server 2003, Windows Server 2008, Windows 7, Windows 8, Windows 10, Windows 2012</p> <p>64-bit OS: Windows Server 2000, Windows Server 2003, Windows Server 2008, Windows 7, Windows 8, Windows 10, Windows 2012</p>   |
| Browser          | <p>Internet Explorer 6.0 or above required</p> <p>Note: Adobe Flash is required for installing OnCell Central Manager.</p> <p>As of January 12th, 2021, Adobe Flash Player is no longer supported by Adobe and all standard browsers. In order to use the OnCell Central Manager software, contact Adobe for a Flash Player license extension.</p> |

## Ordering Information

|            |                        |
|------------|------------------------|
| Model Name | OnCell Central Manager |
|------------|------------------------|

© Moxa Inc. All rights reserved. Updated Jan 15, 2021.

This document and any portion thereof may not be reproduced or used in any manner whatsoever without the express written permission of Moxa Inc. Product specifications subject to change without notice. Visit our website for the most up-to-date product information.